

Environmental Racism: Cry of the Poor and the Cry of Earth

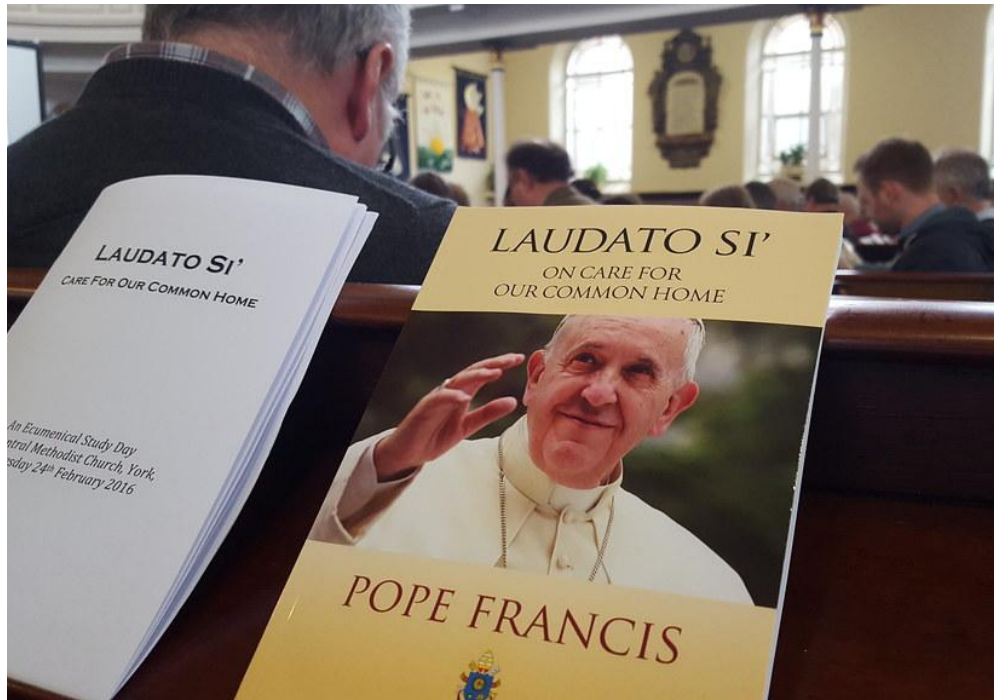
Pope Francis' Invitation to Love
Our Neighbors More
Abundantly



Laudato Si'

May 24, 2015

http://www.vatican.va/content/francesco/en/encyclicals/documents/papa-francesco_20150524_enciclica-laudato-si.html



Praise Be to You!

Canticle of the Sun - St Francis of Assisi

“[a]n inadequate presentation of **Christian anthropology** gave rise to a wrong understanding of the relationship between human beings and the world. Often, what was handed on was a Promethean vision of mastery over the world, **which gave the impression that the protection of nature was something that only the faint-hearted cared about.**” (LS, 116)

Three Dimensions of Loving Our Neighbors

*Nothing about us
Without us
Is for us*

Ecological Well Being

**Safe Places; Clean Drinking Water; Sanitation;
Beauty; Healthy Food; Recreation; Breathable air;
Non-heat islands; Protection from rising sea
levels; ecosystems informing human practises...**



Impact of e-Waste from North America in Guiyu, China as a way of making money for this community

Economic Well Being

Access to Safe work; Living Wage; Sustainable Economies; Don't take more than what can be sustained by the planet (regenerative economies); Circular Economies; Inviting innovation; Economies in Service of Humanity and Planet...



1,000 tons of oil spilled into the Indian Ocean has endangered world-renowned coral reefs and lagoons and the way of life in Mauritius

**Loving Your
Neighbor
Abundantly in the
21st Century**

Social Well Being

Healthy Communities and Families; Interconnected Communities; Access to Goods of Society (healthcare; education; jobs); Ability to Contribute to Society; All have Value and Worth

Catholic Social Teaching (USCCB)



Interdependent



SUSTAINABLE DEVELOPMENT GOALS



What is Similar? What is Different? How Could People of Faith Contribute to Achieving These?

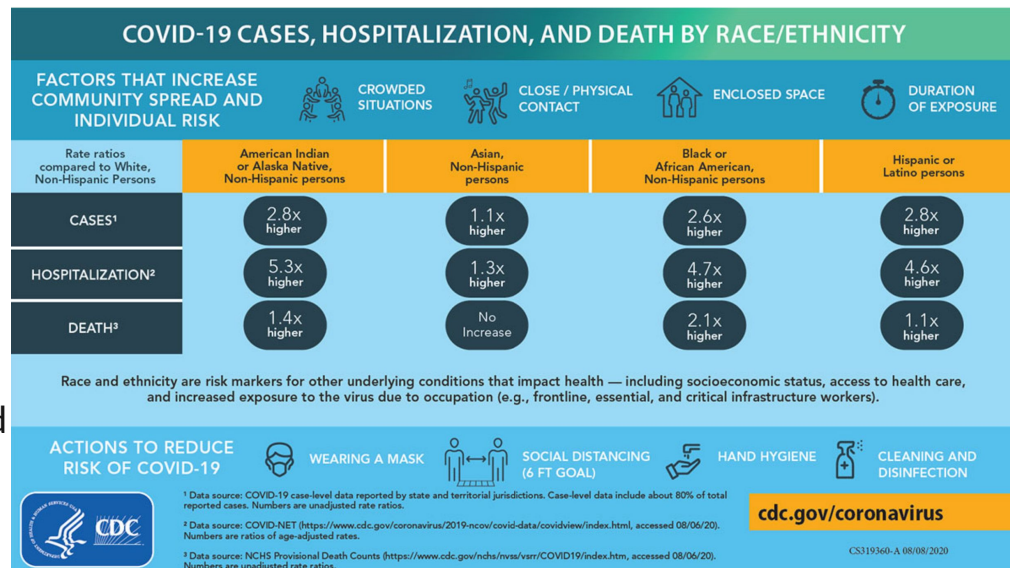
Why #1: Why do low income communities and communities of colour have higher rates of many health conditions (obesity, diabetes, heart disease, lung problems) which are made worse by polluted, toxic or degrading ecosystems?



Use the chat if you want to share your thoughts!

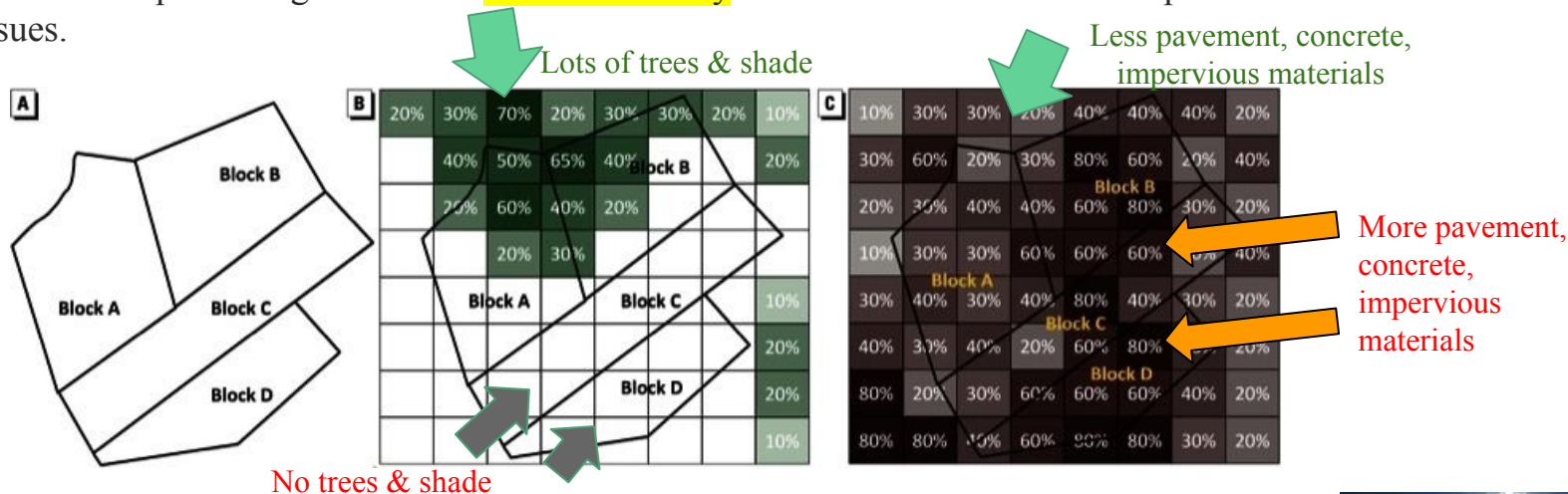
Why #2: Why does it take low income communities and communities of colour longer to bounce back from natural disasters or why are they more susceptible during a global pandemic?

Why #3: Why are low income communities and communities of colour more exposed to environmental hazards and the impacts of ecological degradation?



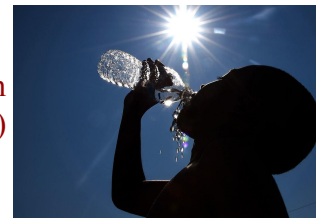
Digging Deeply into the First Why... Health Conditions

What was Found? Black Americans are **52% more likely** than white Americans to live in urban heat islands and our Hispanic neighbors were **21% more likely**. This made them more susceptible to certain health issues.



Cooler areas have more trees, more shade, and less hard, paved areas)

Hoter areas have less trees, less shade, and more hard, paved areas (and often inadequate air conditioning due to income levels)



Each census block (2000 urban US and Puerto Rico) was classified as having either no tree canopy or some tree canopy, and as having either $\geq 50\%$ impervious surface or $< 50\%$ impervious surface, as illustrated in Figure 1. For example, Blocks C and D would be classified as having no tree canopy (Figure 1B), and Blocks B and D would be classified as $\geq 50\%$ impervious surface (Figure 1C).

Towards Resilience:



December 2018

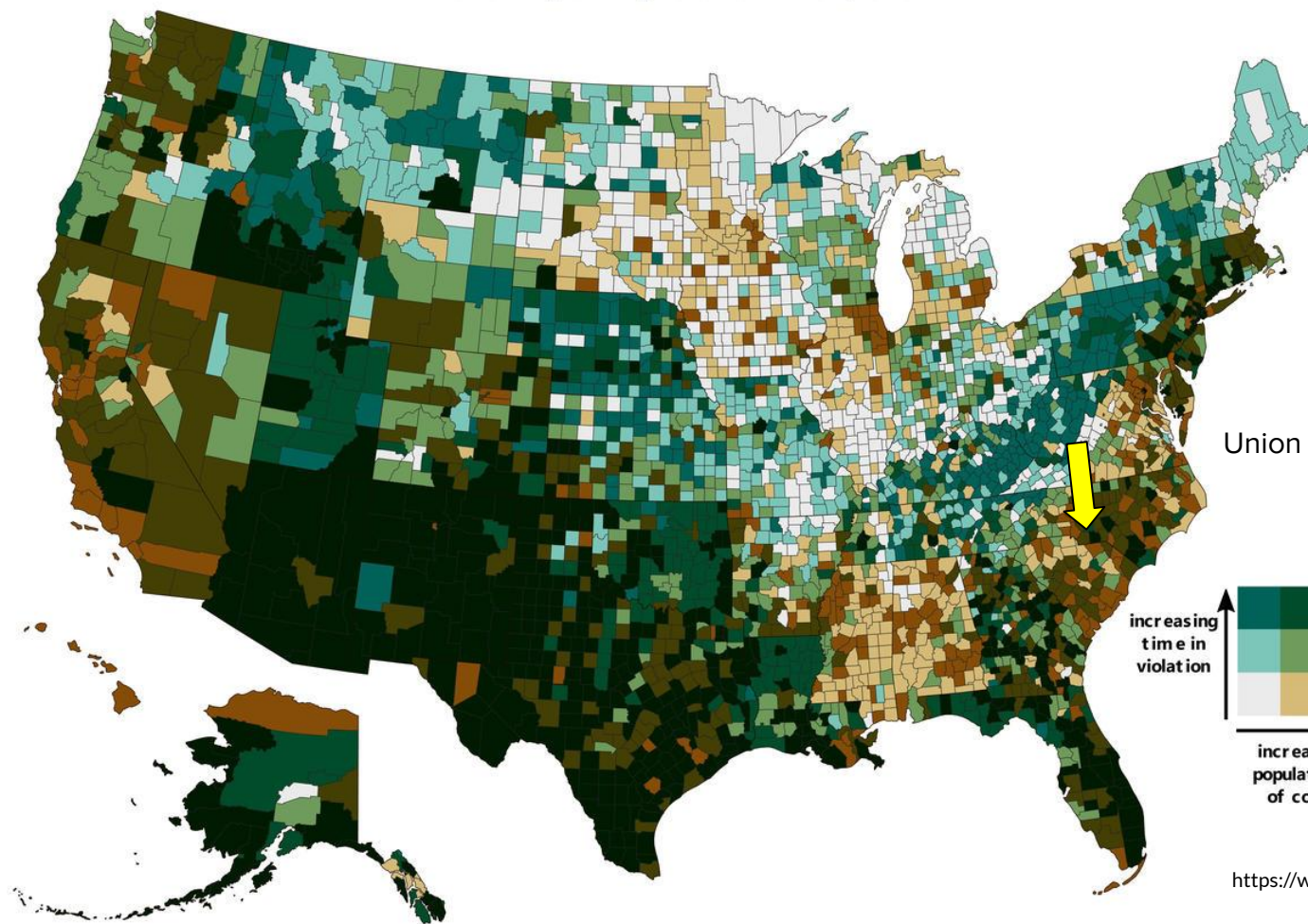


CMCL members are working with the Mecklenburg County Commission's Environmental Stewardship Committee to adopt a resolution similar to Charlotte's. Charlotte has a long standing Food Council (for advocacy and education)

Union County ... no Climate Committee and the environmental contribution to 2050 plan is concerning Litter. Union County just started creating a Food Council.

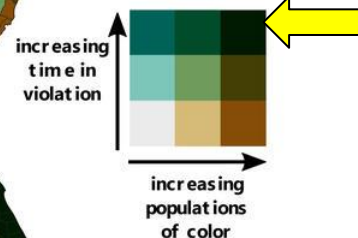
Digging Deeply into the Second Why ... Resilience

INTERSECTION OF LENGTH OF TIME OUT OF COMPLIANCE AND RACIAL, ETHNIC, AND LANGUAGE VULNERABILITY
BY COUNTY, JUNE 1, 2016 TO MAY 31, 2019.



Digging
Deeply into
the Third
Why ...
Exposure

Union County, NC...



Longest time
with dirty water
in areas of high
numbers of POC

| Category | National (US) | State (NC) | County A (Overall) | County A Town 1 | County A Town 2 | County B | County C |
|--|---|---|--|--|--|---|--|
| Demographics | White: 60% Hispanic: 18.5% Black: 13.4% | White: 63% Black: 21% Hispanic: 10% | White: 71% Black: 13%; Hispanic: 12% | White: 82.3% Black: 10% Hispanic: 7.8% | White: 56%; Black: 31%; Hispanic: 9% | Black: 52%; White: 41% Hispanic: 4% | Black: 49% White: 44% Hispanic: 4% |
| Quality of Life | -- | -- | 6th | -- | -- | 85th | 96th |
| Median Household income | \$60,293 - \$63,937 | \$53,900 | \$80,400 | \$107,356 | \$42,000 | \$38,400 | \$38,123 |
| Poverty Rate | 11.8 % - 13.1% | 14% (15th in the nation) | 7% | 3.6% | ~30% | 20% | 23% |
| Years of Potential life lost rate (lower is better) | | 7700 (overall) | 5700 overall (Black -8900; White - 5600) | -- | -- | 9500 Overall (Black - 10,900; White - 7000) | 11,400 Overall (Black - 13,500; White - 9,400) |
| Poor to Fair Health Adult Obesity | -- 38.2% | 17% 31% | 14% 32% | -- -- | -- -- | 23% 41% | 23% 39% |
| Access to Exercise Food Insecurity | -- | 74% 15% | 65% 10% | -- -- | -- -- | 38% 21% | 6% 21% |
| Access to Computer (home) Broadband Internet Reading Scores Math Scores | 89% 80% -- -- | 87% 78% 3.2 3.1 | 93% 89% 3.5 3.5 | 98% 95% Top 5% in NC | 79% 69% Top 50% in NC | 74% 56% 2.8 2.7 | 79% 69% 2.9 2.6 |

| Category | National (US) | State (NC) | Union County | Union County Waxhaw | Union County Wingate | Warren County | Anson County |
|--|---|---|--|--|--|---|--|
| Demographics | White: 60% Hispanic: 18.5% Black: 13.4% | White: 63% Black: 21% Hispanic: 10% | White: 71% Black: 13%; Hispanic: 12% | White: 82.3% Black: 10% Hispanic: 7.8% | White: 56%; Black: 31%; Hispanic: 9% | Black: 52%; White: 41% Hispanic: 4% | Black: 49% White: 44% Hispanic: 4% |
| Quality of Life | -- | -- | 6th | -- | -- | 85th | 96th |
| Median Household income | \$60,293 - \$63,937 | \$53,900 | \$80,400 | \$107,356 | \$42,000 | \$38,400 | \$38,123 |
| Poverty Rate | 11.8 % - 13.1% | 14% (15th in the nation) | 7% | 3.6% | ~30% | 20% | 23% |
| Years of Potential life lost rate (lower is better) | | 7700 (overall) | 5700 overall (Black -8900; White - 5600) | -- | -- | 9500 Overall (Black - 10,900; White - 7000) | 11,400 Overall (Black - 13,500; White - 9,400) |
| Poor to Fair Health Adult Obesity | -- 38.2% | 17% 31% | 14% 32% | -- -- | -- -- | 23% 41% | 23% 39% |
| Access to Exercise Food Insecurity | -- | 74% 15% | 65% 10% | -- -- | -- -- | 38% 21% | 6% 21% |
| Access to Computer (home) Broadband Internet Reading Scores Math Scores | 89% 80% -- -- | 87% 78% 3.2 3.1 | 93% 89% 3.5 3.5 | 98% 95% Top 5% in NC | 79% 69% Top 50% in NC | 74% 56% 2.8 2.7 | 79% 69% 2.9 2.6 |

Robert Bullard is photographed in Washington, D.C., on Sept. 24, 2013. Photo: Marvin Joseph/The Washington Post via Getty Images

“You tell me your zip code, and I can tell you how healthy you are.”



Environmental Racism: Origin Story



Dr. Benjamin Chavis, director of the United Church of Christ's Commission for Racial Justice (CRJ) coined the term environmental racism in response what happened in Warren County, North Carolina.



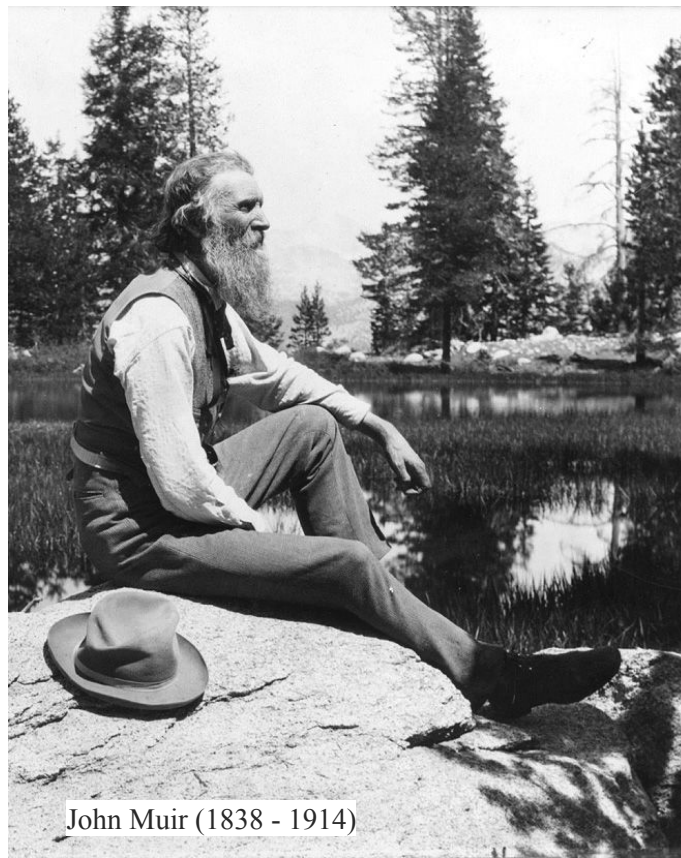
Warren County, NC - 1982 Protest of PCB Landfill



Margaret Murie (1902-2003)



Aldo Leopold (1887-1948)



John Muir (1838 - 1914)



Teddy Roosevelt
(1858 - 1919)

US Environmental Movement: Origins

Intersectional Environmentalism

<https://www.greengirlleah.com/about-1>



Pope Francis' Laudato Si' espouses
Intersectional Creation Care



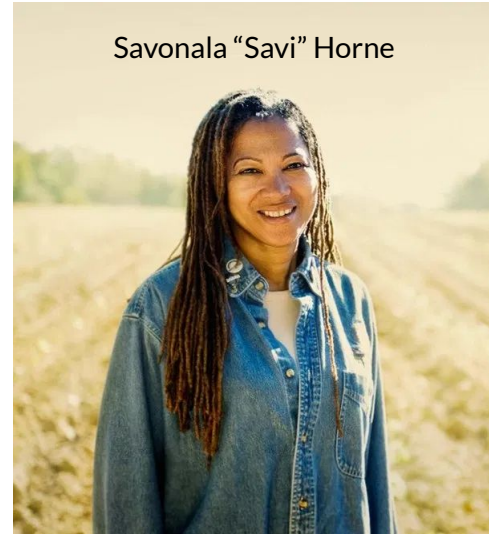
Francia Marquez



Madonna Thunder Hawk



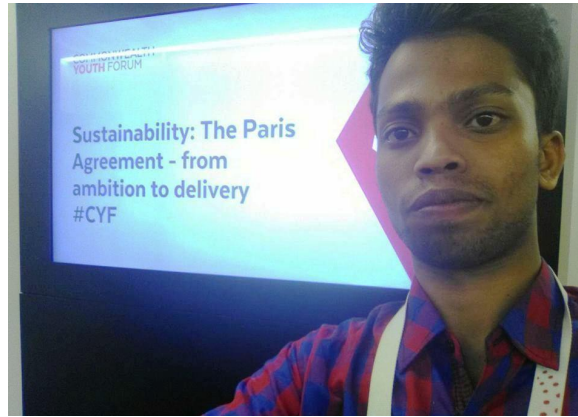
Elizabeth Mrema



Savonala "Savi" Horne

Global Environmental Movement: Which
of Today's Leaders Do You Know?

Greta Thunberg



Sohanur Rahman



Isra Hirsi

Xiye Bastida



Vanessa Nakate

Kevin
Patel



"Mari" Copeny

Which of these Young Justice Advocates Do You Know? Why?

Ecological Conversion: Seeing the Message of Love in Scripture, Catholic Social Teaching and Laudato Si' with new eyes and hearts

“Teacher, which is the great commandment in the **Law**?”

And he said to him, “You shall love the Lord your God with all your heart and with all your soul and with all your mind. This is the great and first commandment. And a second is like it: You shall love your neighbor as yourself.
(Matt 22: 34-40)



Immediately,
something like scales
fell from Saul's eyes,
and he could see
again. He got up and
was baptized ...
Acts 9:18

Praise Be!

For more check out: <https://www.thewrightecotheologian.com>
(especially Blog Posts and Podcasts from CCG)



Last Words
Praise Be!